

Touch Choice Application

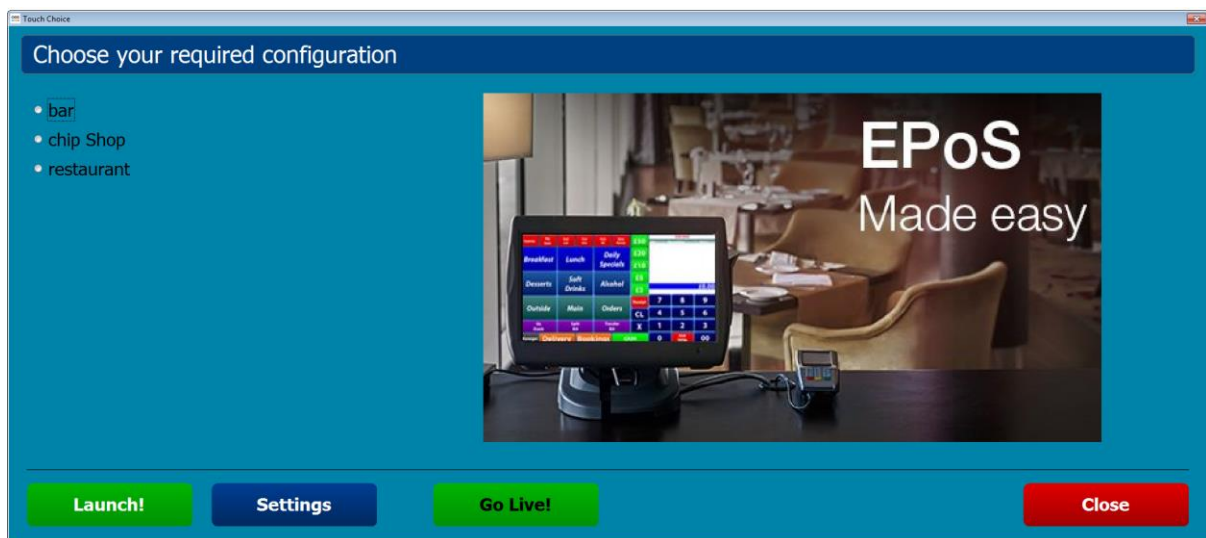
The purpose of the Touch choice application is to enable a dealer to be able to have several demo Touch folders on a terminal/laptop and to be able to easily switch between.

Folder Naming:

You can have up to 12 demo touch folders appear on the screen below. To add a Touch folder to the list the new folder needs to be named accordingly. The folder name must start with **Touch_Demo_**

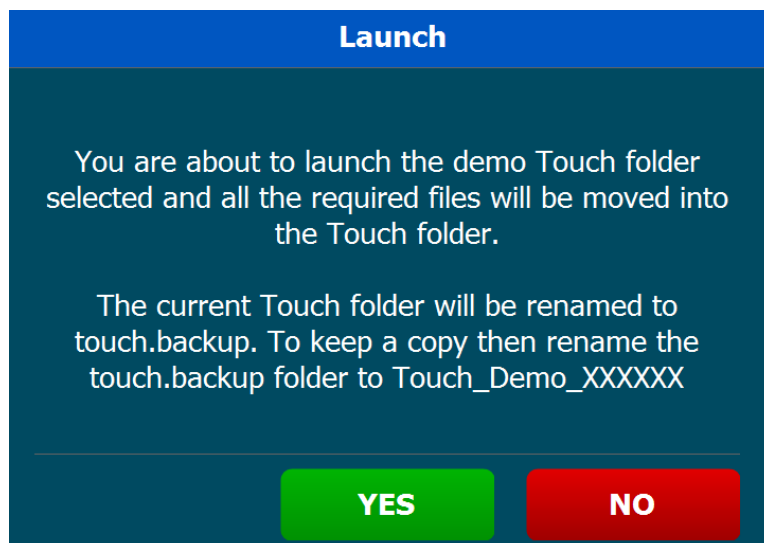
For example:

- Touch_Demo_bar
- Touch_Demo_chip shop
- Touch_Demo_restaurant



Launch

To launch a demo Touch folder select the folder you wish to run (click on it) and press the Launch! button. This message box below will then appear:



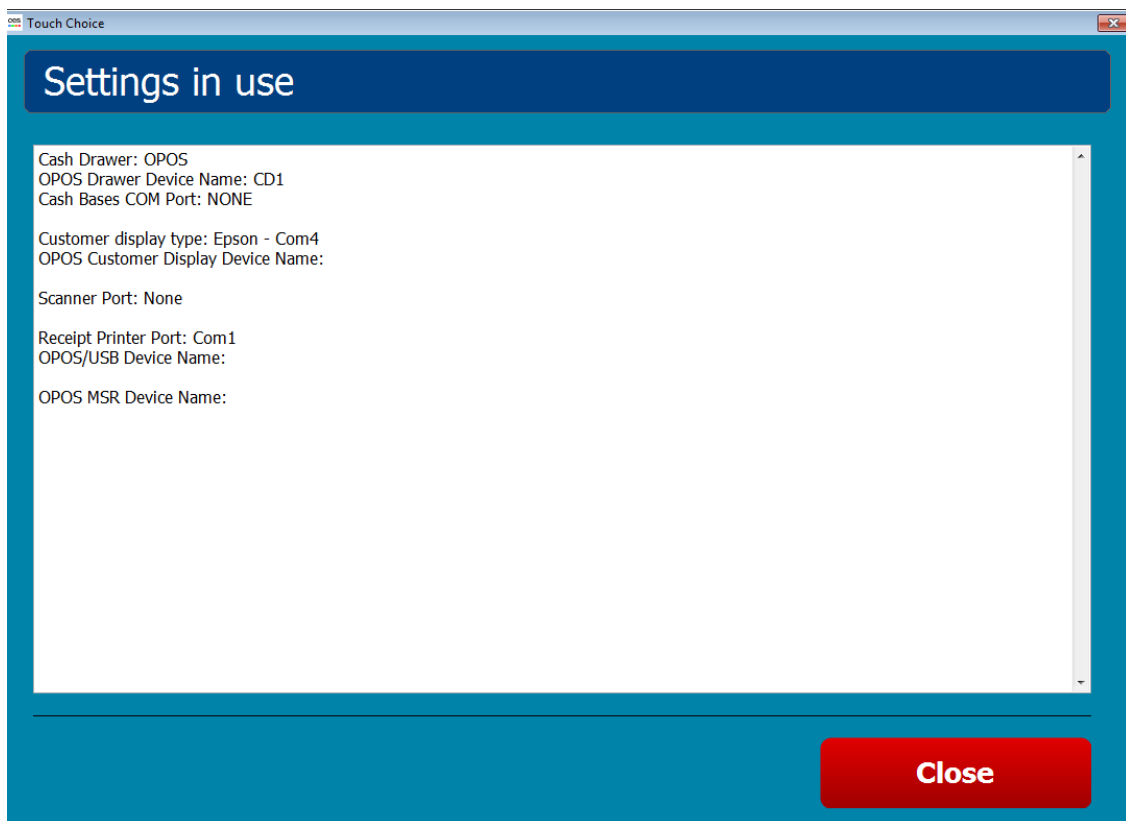
The purpose of the message is to inform the person running the demo folder that the current Touch folder will be renamed as **touch.backup** before setting up and running the demo folder selected.

If changes have been made to the current Touch folder and you wish to save the updates then the touch.backup folder should be renamed. i.e. rename **touch.backup** to **Touch_Demo_Bar New**, (you would then see **bar new** appear on the list next time the application is run).

Note: If you wish to run the same demo folder as the last time there is no need to use this application. Simply use the standard **Touch** shortcut and it will run the current touch folder. Running the standard **Touch** shortcut will be quicker as it just runs the current Touch folder without doing backups and moving files around.

Settings

This button is used to view the peripheral settings of the current Touch folder to quickly see the connection settings for each device.



Go Live:

This button should be used when setting a terminal ready for delivery to a live customer. This will remove all the demo Touch folders named **Touch_Demo_XXXXX**.

It is recommended that the **TouchChoice** folder and **Touch Choice Desktop shortcuts** are also deleted. These need to be manually deleted.

Note: This is a very dangerous option to leave on an end users live system as it has the potential for the end user to overwrite their live Touch folder.